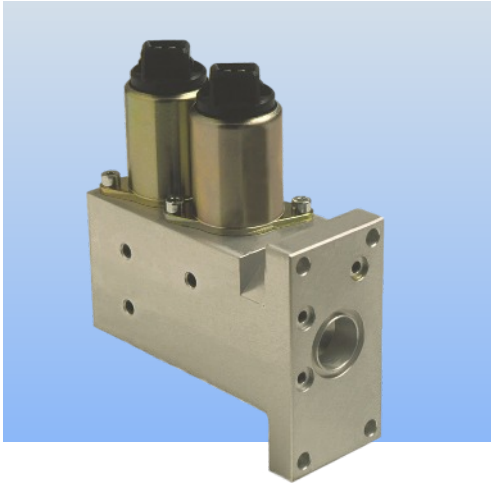


HYDRAULIC VALVES

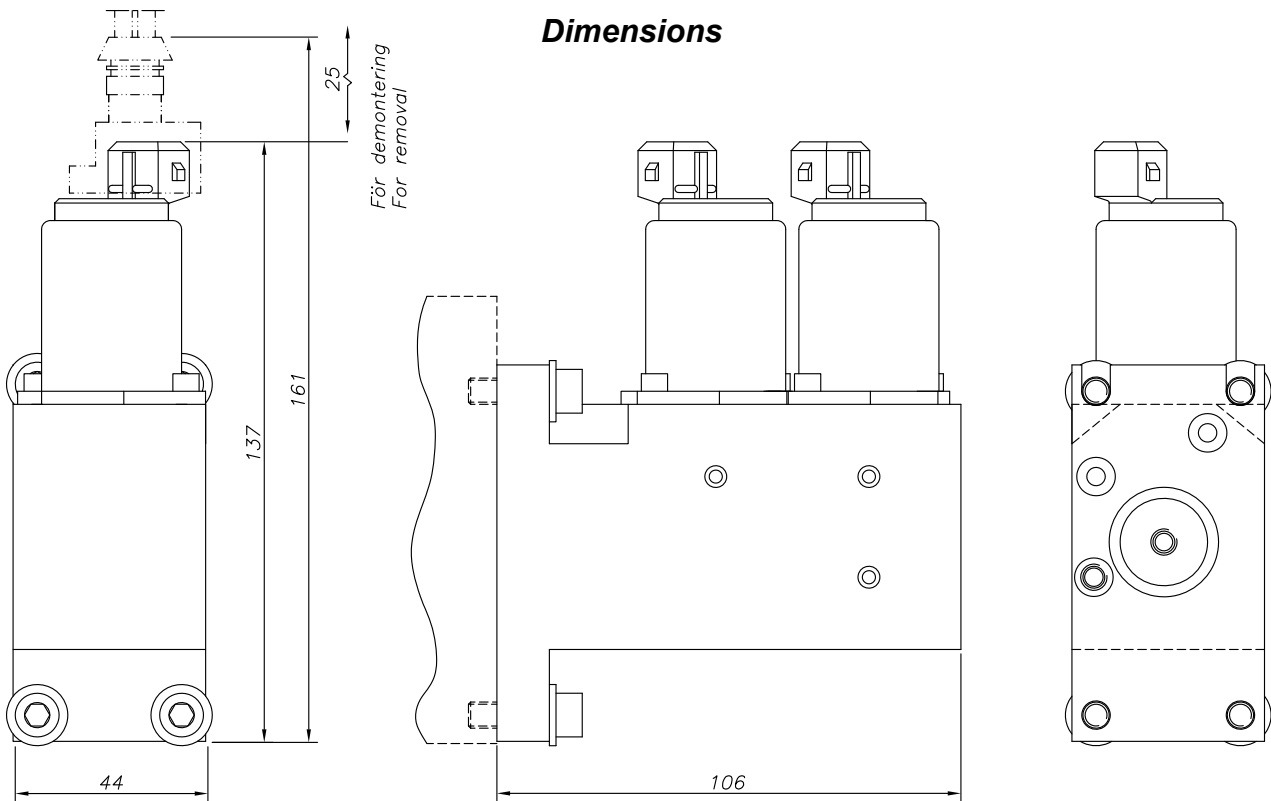
Spool control

Hydraulic valve series 86856x-xx
Operating pressure, 20-30 Bar.



Selection table

Part no:		Description
868560	12	Spool control 12Vdc, (20bar).
868560	24	Spool control 24Vdc, (20bar).
868561	24	Spool control 24Vdc, (25bar).
-	-	-
-	-	-



Housing: aluminium, anodized.
Sealings (o-rings): NBR.
Weight: 600g.