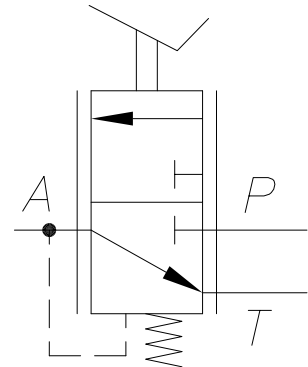
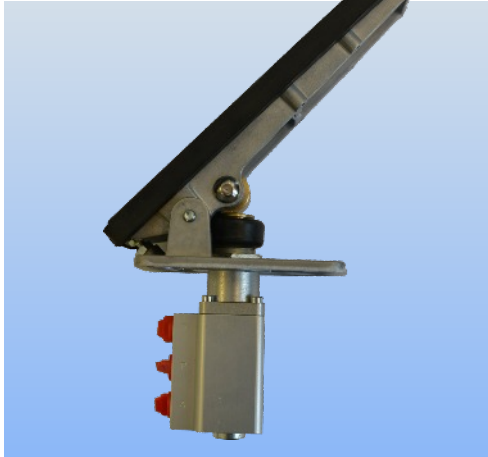


# HYDRAULIC VALVES

## Hydraulic control valve

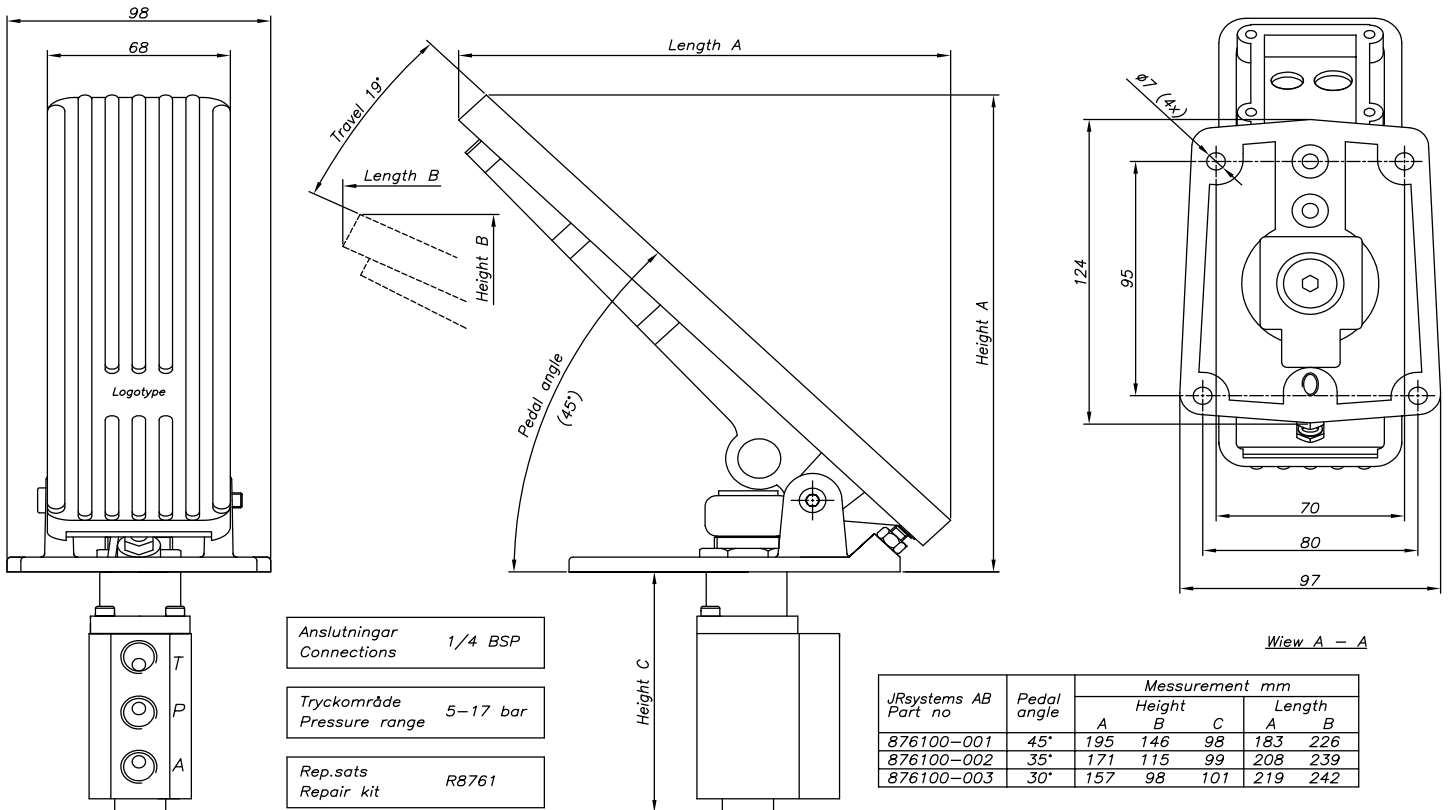
Hydraulic treadle valve, series 876100-xxx  
 Operating pressure, 20-30 Bar.  
 Regulated pressure, 5-17 Bar



### Selection table

Part no:	Deg	Description
876100-001	45	Hydraulic treadle valve, pedal angle 45
876100-002	35	Hydraulic treadle valve, pedal angle 35
876100-003	30	Hydraulic treadle valve, pedal angle 30
-	-	-
-	-	-

### Dimensions



Treadle assembly: aluminium die-cast. Valve housing: aluminium, anodized.  
 Roller :brass. Sealings (o-rings): NBR.  
 Weight: 1300g.